



NATIONAL
WILDLIFE
REFUGE SYSTEM

Cypress Creek National Wildlife Refuge



Ben McGuire (Refuge Manager)







Youth Conservation Corps



Trail Improvements



Japanese Chaff Flower (*Achyranthes japonica*)



Proposed_Treatment_Chaff_2022



16 S 312614 E 4128409 N



BAT SURVEYING

- Acoustic devices
- Mist Netting
- Tagging Bats
- Indiana Bat (federally endangered).
- Emergence surveys (17



Powless Tract-CCNWR

Legend

- CCNWR Ownership
- IDNR Conservation Area
- CCNWR Acquisition Boundary
- Potential Acquisitions

Mississippi River

Powless Tract 71 acres

3

0 0.175 0.35 0.7 Miles

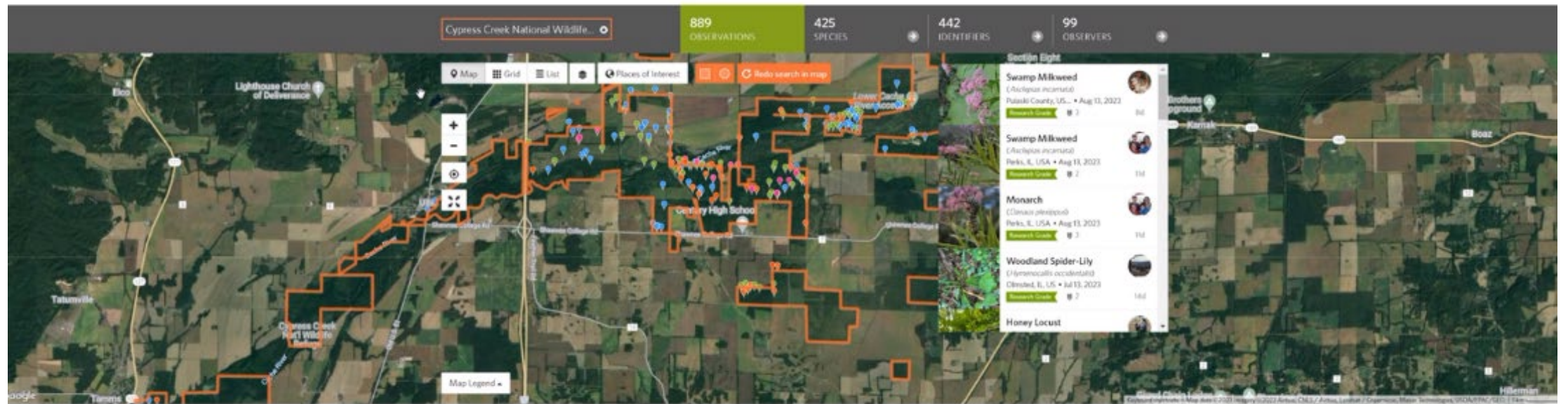
Source: Esri, DigitalGlobe, GeoEye, Earthstar Geographics, CNR Aero, USDA, USDA, AeroGRID, IGN, and the GIS User Community

Shannon East, DPhil, is a Senior Lecturer in the Department of Health, Behavior, and Society, Harvard School of Public Health, Boston, MA, USA. He is also a Senior Lecturer in the Department of Health, Behavior, and Society, Harvard University.



Observations

Search for Species Location Go Filters



Targeted Resource Acquisition Comparison Tool (TRACT)

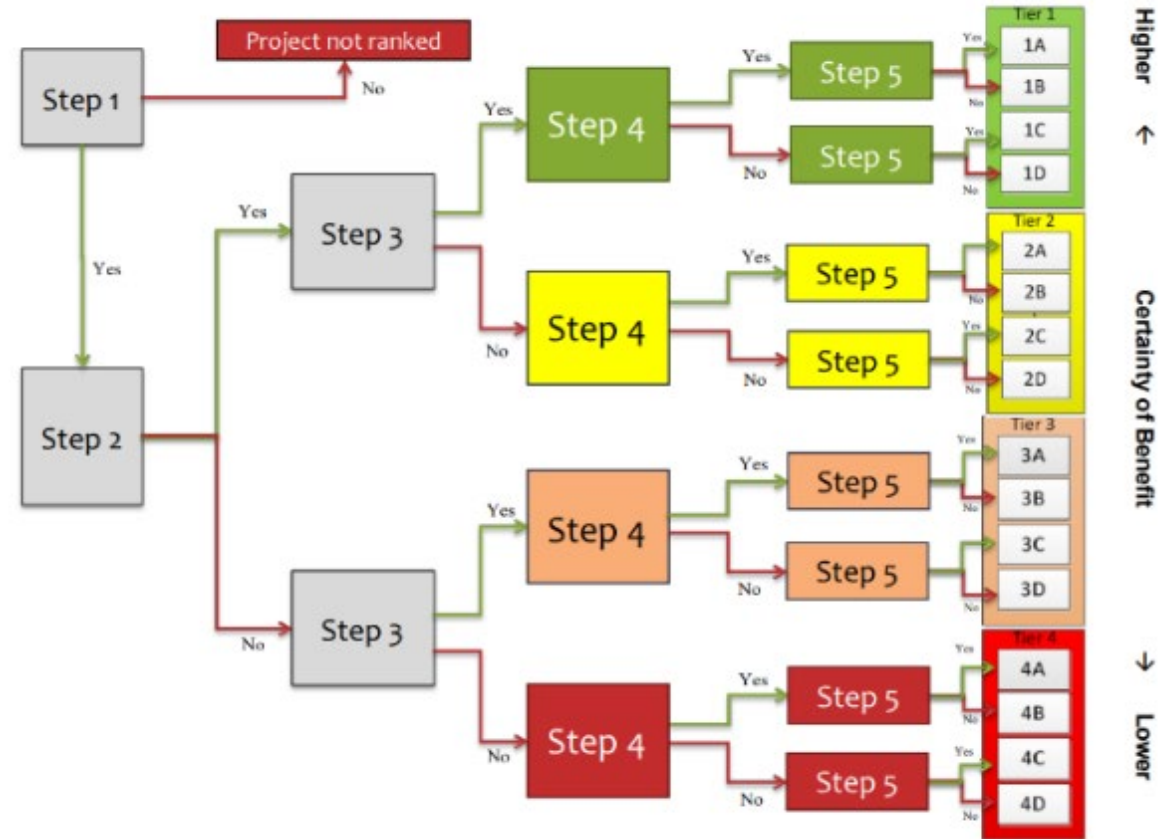


Figure 1

Targeted Resource Acquisition Comparison Tool (TRACT)

Region <input type="text" value="1"/>	Refuge <input type="text"/>	LIT <input type="text"/>	BCR <input type="text"/>	Waterfowl (2019) <input type="text"/>	Shorebirds (2022) <input type="text"/>	Waterbirds (2021) <input type="text"/>	landbirds (2021) <input type="text"/>	T&E Spec (2015) <input type="text"/>	T&E spec (2023 pilot) <input type="text"/>	Biological score (score definition, tab) <input type="text"/>	Landscape resiliency (2021) <input type="text"/>
3	Big Muddy NWR	BMD	24	3B	1B	3B	4D	5C	2B	2.07	3
3	Cypress Creek NWR	CYP	24	3B	1D	NC	1D	4D	3CD	1.87	2
3	Green Bay Islands NWR	GRB	23	1B	1B	NC	NR	5D	1B	2.33	3
3	Hackmatack NWR	HAC	22	3B	2D	3D	3D	5D	5D	1.47	4
3	Michigan Islands NWR	MCH	12	1B	3B	3B	NC	5C	2ABCD	2.2	2
3	Middle Mississippi River NWR	MMR	24	4D	1D	1B	4C	4B	3D	1.8	3
3	Neal Smith NWR	NLS	22	3D	4D	NR	5B	4D	2CD	1.6	2
3	Northern Tallgrass Prairie NWR	NTP	11	1D	1B	3A	2D	4C	2A	2.6	3
3	Ottawa NWR	OTW	22	3B	1B	3D	3D	5C	2D	2.13	3
3	Patoka NWR	PTK	24	3D	3B	2A	2D	4C	2CD	2.13	3
3	Shiawassee NWR	SHW	12	4B	3D	5D	5B	5D	NR	0.73	4
3	Upper Mississippi River NWR	UPM	23	1B	3D	3B	3C	NC	NC	1.6	2



Questions???

Benjamin_McGuire@fws.
gov

618-306-1436

[https://www.fws.gov/refu
ge/cypress-creek](https://www.fws.gov/refuge/cypress-creek)



NATIONAL
WILDLIFE
REFUGE SYSTEM